



ADULTS AND COMMUNITIES OVERVIEW AND SCRUTINY COMMITTEE
5 SEPTEMBER 2022

INITIAL CONSULTATION FINDINGS ON DRAFT
LEICESTER, LEICESTERSHIRE AND RUTLAND
CARERS STRATEGY 2022-2025

JOINT REPORT OF THE DIRECTORS OF
ADULTS AND COMMUNITIES, CHILDREN AND FAMILY SERVICES AND
PUBLIC HEALTH

Purpose of the Report

1. The purpose of this report is to advise the Committee on the initial findings from the public consultation on the draft joint Leicester, Leicestershire and Rutland (LLR) Carers Strategy 2022-2025, which is attached as an Appendix to this report.
2. The Committee is invited to make any comments on the initial findings of the consultation.

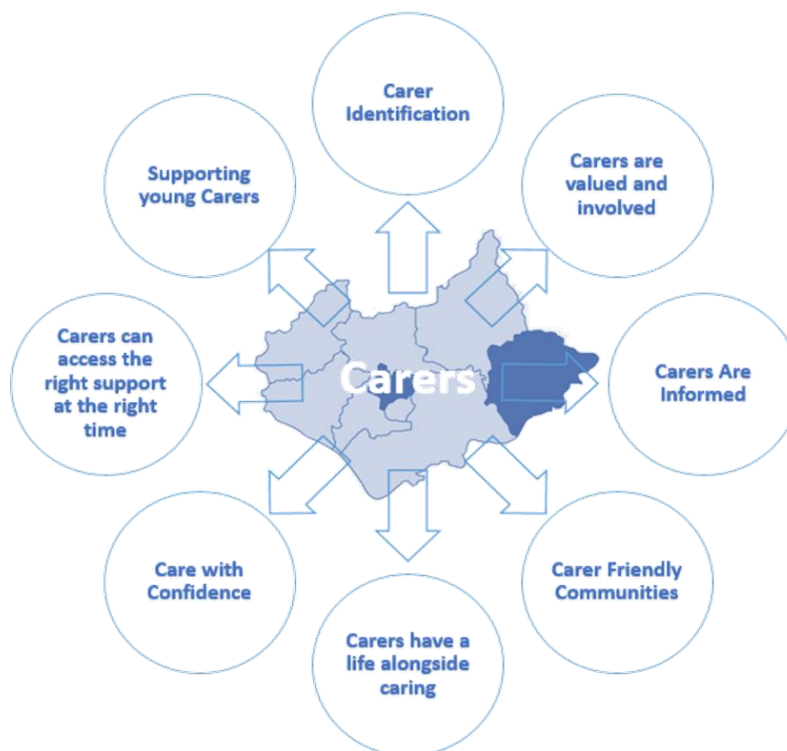
Policy Framework and Previous Decisions

3. The relevant policy framework includes:
 - The Care Act 2014;
 - The Children and Families Act 2014;
 - The White Paper - People at the Heart of Care: adult social care reform - December 2021;
 - Adults and Communities Department Ambitions and Strategy for 2020–2024;
 - Leicestershire Joint Health and Wellbeing Strategy 2022-2032;
 - SEND and Inclusion Strategy 2020-2023;
 - Leicestershire County Council Medium Term Financial Strategy (MTFS);
 - Leicestershire County Council Strategic Plan 2022-2026.
4. The LLR Joint Carers Strategy 2018–2021 “Recognising, Valuing and Supporting Carers” set out eight key strategic priorities relating to unpaid carers of all ages, and was developed jointly by Leicester City, Leicestershire County and Rutland County Councils and the CCGs (now the Integrated Care Board [ICB]) across the LLR area.
5. On 27 May 2022, the Cabinet approved a formal six-week joint consultation, alongside the partner Councils and CCGs on a refresh of the priorities and actions identified for supporting unpaid carers which commenced during the week beginning 6 June 2022, National Carers’ Week.

6. The Committee considered a report and provided comments on the draft joint LLR Carers' Strategy (2022-2025) for consideration as part of the formal consultation at its meeting on 6 June 2022.

Background

7. The LLR Joint Carers Strategy 2021–2025 sets out eight strategic priorities relating to unpaid carers of all ages set out in the diagram below:



8. The priorities were built upon the feedback of carers across the LLR area for the LLR Joint Carers Strategy 2018–2021 “Recognising, Valuing and Supporting Carers”.
9. An engagement exercise undertaken during the summer of 2021 demonstrated that Leicestershire carers continue to identify with the priorities contained in the 2018-2021 Strategy and agreed they should remain.
10. Only one of the priorities received a minor adjustment. This was Priority 6, “*Carers and the impact of technology products and the living space*”. However, with the wealth of technology available, all organisations were keen to see this priority continue to be represented and have therefore suggested an alternative priority title “*Care with Confidence*” – which will be based around using technology and skills to support carers.
11. Each partner organisation is responsible for their individual supporting delivery/action plans for delivery of the Strategy priorities. Plans were reviewed as part of the refresh of the Strategy.
12. Leicestershire’s plan was used to drive improvements across the County Council including:
- Training sessions for staff working with carers;
 - Online carers’ assessment application system;

- Dedicated carers' team within the Customer Service Centre.
13. There have also been a number of collective achievements from the 2018-2021 Strategy including:
- Launch of the Carers Passport across the LLR area;
 - Quality markers introduced in GP surgeries;
 - Staff training around carer awareness, across a range of organisations;
 - Information for carers reviewed and updated this includes web pages and information booklets;
 - Increase in the numbers of people on carers registers;
 - An LLR carers group working with Sortified Community Interest Company (a social enterprise and consultancy) promoting carer engagement.
14. Ongoing challenges which will be addressed within the Strategy refresh are:
- Continuing to raise awareness of the issues faced by carers and promoting early identification of carers;
 - Ensuring information is updated regularly;
 - Involving carers at a strategic level in service planning and design.
15. The Government White Paper, "People at the Heart of Care: adult social care reform", published in December 2021, has also been used to inform the supporting Strategy Action Plan.

Consultation Findings and Next Steps

16. There were eight weeks of public consultation from 6 June-31 July 2022 on the draft refreshed Strategy, each partner organisation hosted their own consultations and will be reporting back to their individual organisations on their findings.
17. Consultation sought the views of the general public, carers, people who use social care services, stakeholders and partners via:
- an online consultation;
 - a public event held at Leicester City Football Club on 13 July 2022;
 - Feedback via commissioned service;
 - Council officer attendance at meetings regarding the Strategy Refresh.
18. The consultation was promoted in advance of and during the consultation period to stakeholders and partners including:
- Carers, people using services, and the public;
 - Leicester City Council;
 - Leicester, Leicestershire and Rutland CCGs;
 - Rutland County Council;
 - Healthwatch;
 - Voluntary Action South Leicestershire;
 - Lightbulb
 - Children and Family Services;

- Adult Social Care Commissioning Teams;
 - Leicestershire Learning Disability Partnership Board;
 - Public Health;
 - Leicestershire Fire and Rescue.
19. The consultation closed at midnight on 31 July 2022. It is anticipated that final data for the consultation period will be received week commencing 15 August 2022; initial findings have informed this report.
 20. Strategic partners from across LLR will be meeting in early September to discuss collective findings and to agree any subsequent amendments that need to be made to the LLR strategy document.
 21. The collective outcomes from the consultation will determine the final version of the Carers' Strategy for the coming three years. Specific partner consultation findings will be used to build on the individual action plans across the Partnership.

Overview of Consultation Findings for Leicestershire

22. There have been 45 online Leicestershire responses to the consultation. The consultation in 2018 received 157 online responses.
23. A full summary report of the consultation responses for Leicestershire is being produced.
24. The findings below represent online responses and do not include feedback or comments provided as part of group meetings or events.
25. Of the 45 Leicestershire respondents, 33 (73%) were carers and of these, only 16% (7) are in receipt of some form of carers service i.e. receiving a carers personal budget, attending a carers group or receiving other specific support for carers.
26. 59% (26) of respondents felt the draft Strategy reflects carer issues.
27. When asked how important the priorities were only three priorities were deemed as fairly or very important by over 90% of respondents.
28. 81% (34) of respondents agreed the priorities remain current and correct.
29. 56% (23) of respondents agreed with the delivery actions with another 32% (13) stating they "neither agree nor disagree" with the actions. The comments reflect indifference; a selection is shown below:
 - *It all misses the point that carers don't always want to be carers and are only doing it because they can't get the care packages they need for their loved ones.*
 - *Makes no difference.*
 - *Again central [government] need to see, what this cost is and if you don't get the money, it will fail.*
 - *Where is the VCS [Voluntary and Community Sector] in the strategy? Section CS2.4 mentions commissioned groups for young carers to be signposted to but*

ours is not commissioned by any LA [local authority]. These groups will be lost if referrals are not made.

- *High level actions - More specifics and resources for providing carers with support alongside them in the community and people who can help carers to access services.*
- *I can't see anything that will make any difference to a carer that has been in the role a while. It is the same as I was told 30 years ago.*
- *More help and identifying of young carers. Time away from family and responsibilities*
- *Carers have seen a real terms 11% pay cut since Feb 2022 and should be paid in line with inflation*

28. A number of respondents chose not to provide their gender identity, of those that did 85% (29) of respondents were female. This is higher than the local caring figures, with census data from 2011 showing around 57% of Leicestershire carers are women.
29. Only 15% (5) of respondents identified themselves as male.
30. Of the 35 respondents who provided their age the majority were over 55 years of age (21 responses). No responses were provided by adults under 30. There are a number of young carer (under 18) responses that have been provided on paper copies via the young carers voice work delivered by Children and Family Services. These hard copy responses are currently being processed and findings will be included into the final consultation summary report.
31. A number of respondents also chose not to provide information on their ethnic group, the remaining respondents who did (35) indicated their ethnic group as white. This represented 78% of the respondents.
32. The consultation report, the final refreshed Strategy and action plan for Leicestershire will be submitted to the Cabinet on 25 October 2022 for approval. It is proposed to launch the refreshed Strategy on Carers Rights Day - 25 November 2022.

Resource Implications

33. Council officer resource will be required to update the Strategy and to ensure that the Action Plan is developed and delivered for Leicestershire.
34. The Director of Corporate Resources and Director of Law and Governance have been consulted on the content of this report.

Timetable for Decisions

35. Partner organisations across LLR are meeting in early September to discuss the collective findings and make any amendments required to the draft Strategy and action plans before progressing through their respective governance processes to ensure alignment with the planned consultation launch date.

36. The Committee will be sent a copy of the Cabinet reported scheduled for 25 October 2022, where approval of the Strategy will be sought and any comments received will be submitted to the Cabinet meeting.

Conclusions

37. The Committee is invited to comment on the initial consultation findings.

Background Papers

Report to the Cabinet: 16 October 2018 – LLR Carers Strategy 2018 -2021
<https://politics.leics.gov.uk/ieListDocuments.aspx?CId=135&MId=5184&Ver=4>

Leicestershire County Council Strategic Plan 2018-22
<https://bit.ly/3Pe6nh5>

Delivering Wellbeing and Opportunity in Leicestershire – Adults and Communities
 Department Ambitions and Strategy for 2020-24
<https://bit.ly/3swoTaI>

People at the Heart of Care: Adult Social Care Reform White Paper
<https://bit.ly/3w7FfsE>

Leicestershire Joint Health and Wellbeing Strategy 2022-2032
<https://bit.ly/3L8nbTe>

SEND and Inclusion Strategy 2020-2023
<https://bit.ly/3N8CJli>

Leicestershire County Council Provisional Medium Term Financial Strategy (MTFS) 2021
<https://bit.ly/39Pzw1L>

Report to the Cabinet: 27 May 2022 – Draft joint Leicester, Leicestershire and Rutland
 (LLR) Carers Strategy 2022-2025
<https://politics.leics.gov.uk/ieListDocuments.aspx?CId=135&MId=6744&Ver=4>

Report to Adults and Communities Overview and Scrutiny Committee on 6 June 2022 –
 Consultation on Draft Leicester, Leicestershire and Rutland Carers Strategy 2022 – 2025
<https://politics.leics.gov.uk/ieListDocuments.aspx?CId=1040&MId=6840&Ver=4>

Circulation under the Local Issues Alert Procedure

38. None.

Equality and Human Rights Implications

39. A comprehensive Equalities and Human Rights Impact screening assessment has been conducted and approved by the Adults and Communities Departmental Equalities Group. The Strategy was noted to have a positive impact on carers and all of the protected characteristics. The screening assessment will be reviewed post

production of the final consultation summary report to ensure it remains reflective of responses.

Appendix

Draft joint Leicester, Leicestershire and Rutland (LLR) Carers Strategy 2022-2025

Officers to Contact

Jon Wilson
Director of Adults and Communities
Adults and Communities Department
Tel: 0116 305 7454
Email: jon.wilson@leics.gov.uk

Inderjit Lahel
Assistant Director – Strategic Services
Adults and Communities Department
Tel: 0116 305 8821
Email: inderjit.lahel@leics.gov.uk

Jane Moore
Director of Children and Family Services
Children and Family Services Department
Tel: 0116 305 2649
Email: jane.moore@leics.gov.uk

Mike Sandys
Director of Public Health
Public Health Department
Tel: 0116 305 4239
Email: mike.sandys@leics.gov.uk

This page is intentionally left blank